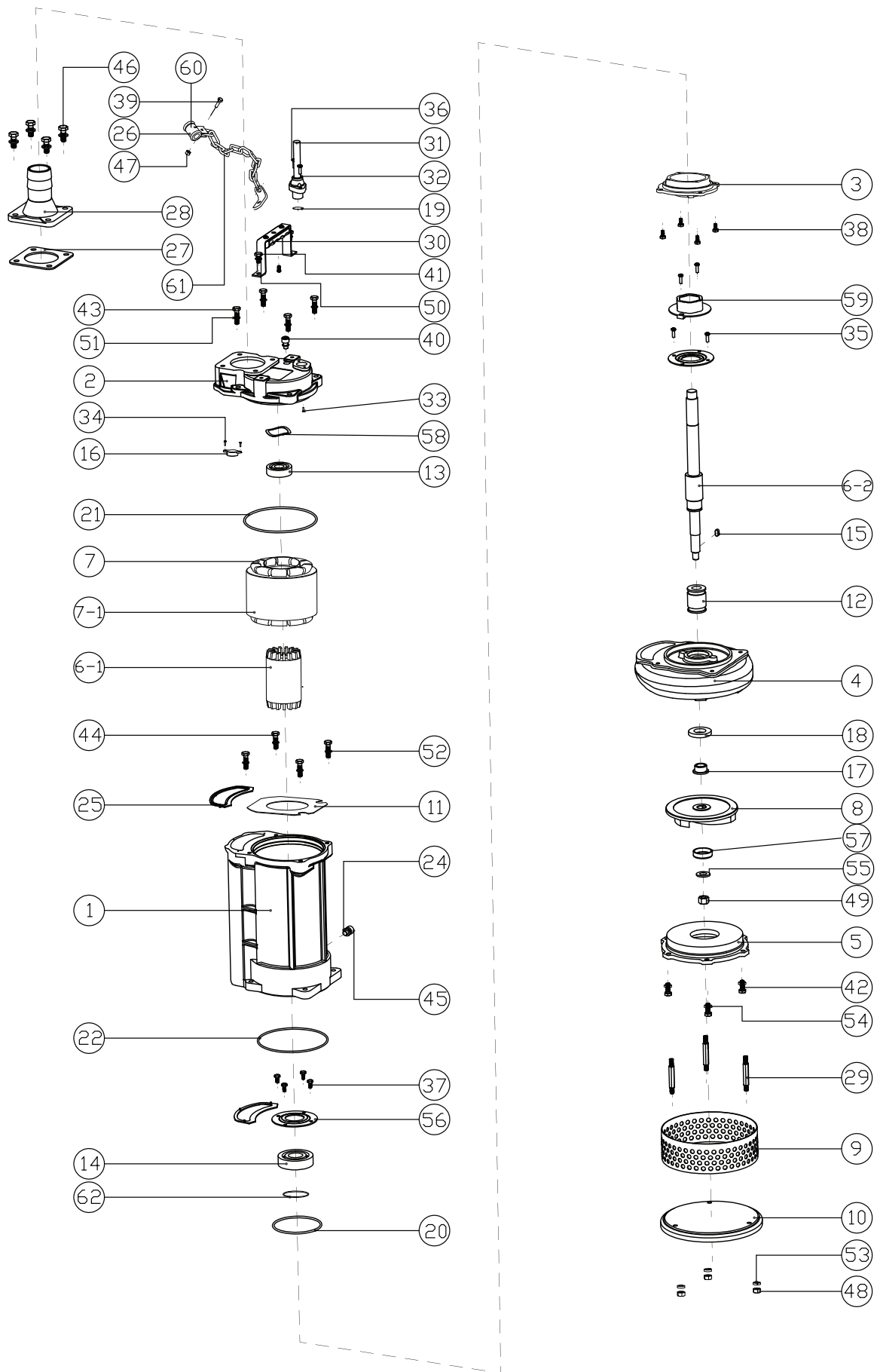


KT215, 222, 322 - SPARE PARTS & ACCESSORIES



KT215, 222, 322 - SPARE PARTS & ACCESSORIES

#	PRONTO CODE	DESCRIPTION	MATERIAL & SPECS
1		Motor housing	HT-250
2		Motor cover	HT200
3		Bearing seat	HT200
4		Pump casing	HT250
5		Pump casing chassis	QT450-10inlet Φ60
6		Shaft	SUS420 Φ24*Φ74*80T*368.5L
6-1		Rotor	Φ24*Φ74*80T, slopel.5, two-column10mm, with blade
6-2		Axle	SUS420368.5L
7		Coil(415V/50HZ)	Φ140*Φ74*80T
7-1		Stator	Φ140*Φ74*80T*24groove
7-2		Copper wire	PolyesterimideEnameled copper wireH0.7
7-3		Outlet line	1.25squaredrubber wire, black*220mm*12*12 half pee
8	810763	Impeller(50HZ)	chrome steel Φ140*12T*3blades
8-1		Impeller(50HZ/heat treatment)	chrome steel Φ140*12T*3blades
8-2		Impeller(50HZ/keyway 5mm)	chrome steel Φ140*12T*3blades
8-3		Impeller(50HZ/machining)	chrome steel Φ140*12T*3blades
8-4		Impeller(50HZ/blank)	chrome steel Φ140*3blades
9	810769	Strainer	SUS304 Φ198*65
10		Strainer plate	HT200 Φ210*20T
11		Coaming	Bakelite Φ145*1.5mm
12	810773	Mechanical Seal	SIC/SIC/CA/CE/NBRED560N-M20/EW-00830
13	810776	Upper bearing	6304ZZ (Iron cover)
14	810779	Lower bearing	6306ZZ (Iron cover)
15		Double round key	SUS3045*5*15
16		Thermo switch	KA-311 DPXL78 (3.4A/120°C)
17		Bush	SCM440 Φ32*Φ18*15L
18		Oil seal	NBR Φ38*Φ25*8t/TC (SS Spring)
19		O-ring (wire head)	NBR Φ20*3t
20		O-ring (bearing cover)	NBR Φ95*3.1t
21		O-ring (motor cover)	NBR Φ140*3.5t
22		O-ring (pump casing)	NBR Φ140*3t
23		Packing(test-water hole)	NBR Φ8*Φ13.5*3t
24		Seal gasket(oil seal)	PTFE Φ16.5*Φ10*2t
25	810782	Motor cover gasket	NBR, 60degree, black
26		Packing(wire protector)	NBR, 60degree, black Φ8.5*Φ21*19t
27	810786	Hose connection gasket	NBR, 60degree, black Φ103*Φ101*3t
28	810788	Hose connection	HT2002" (Hose connection)
29		Double end pillars (strainer plate)	SUS304 Hexagon Machinery Thread M8*75
30	810792	Handle	SUS304+NYLON30%GF
31		Wire	H07RNF*1.0*4C*30M
32	810795	Wire head(10)	NYLON+30%GF Φ10*46t (Oval)
33		Screw (ground wire)	SUS3040val head screw M4*8
34		Screw (Thermo switch)	SUS3040val head screw M4*12
33		Wire	H07RNF*2.5*4C*30M
34	810796	Wire head(Φ12.5)	NBR, 60 degree, black Φ34*Φ12.5*106t
35		Screw (mechanical seal)	SUS3040val head screw M5*8